

Digital Arts and  
Entertainment



# WELCOME GUIDE

2023-2024



**howest**  
university of applied sciences

Meltem Ozcelik (Concept: Amandine Gerard) / Daniil Shashenkov (Concept: Tooth Wu) / Joao Desager (Concept: Tan Zhi Hui)

## HOW TO USE THIS GUIDE

This guide is written for admitted DAE students and covers the following topics:

**Life in Belgium and Kortrijk.**

**This guide gives you a general outline of need-to-know and nice-to-know topics.**

For additional information please refer to the provided website or contact a listed representative. You can search via the table of content for a specific topic.

**howest**  
university of applied sciences

**dnc**  
DIGITAL ARTS & ENTERTAINMENT





## TABLE OF CONTENT

How to get to Belgium	6
Academic calendar	8
Facts about Belgium	10
Cost of living	13
What Kortrijk has to offer	16
Student accommodation	26
First week to-do's	28
Transport in Kortrijk	29
Sorting waste	31
Useful information	32



## WELCOME TO DAE

Dear international student,

Choosing the game or film industry as a career is a dazzling adventure, and we are glad that you chose **the Bachelor of Digital Arts and Entertainment (DAE)** programme as the start of that journey. Here at DAE we believe in excellence and believe that it takes extraordinary effort to develop extraordinary people. You will find DAE to be challenging but ultimately rewarding as it shapes you, your skills and your knowledge into the Digital Entertainment Professional of the future.

At DAE we are strong proponents of a positive, inclusive atmosphere, one in which we hope that you can find a second home. Our bustling community will set you up to make friends for life, creating memories that will stay close to your heart. And when you ultimately extend your wings into the industry, our strong alumni network will keep you connected all over the globe.

You have quite a road ahead of you, and you undoubtedly will have many questions. Higher education is one of the most formative moments of your life, but don't fear – **We are here to guide you, just like this guide is here to assist you in moving into a new country and settling into your new home.**

We are looking forward to welcoming you at DAE.



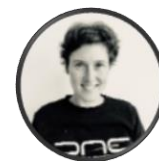
**Dries Deryckere**  
Director DAE



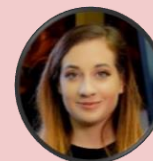
**Sofie Ramis**  
Community Manager



**Wout Gheysen**  
Community Manager



**Isabelle Tassaert**  
Community Manager



**Allie Weis**  
Ethics Coordinator in International  
Game Development



**Inge Defour**  
Coordinator  
DAE International



**ALL YOU NEED TO KNOW ABOUT  
LIVING IN BELGIUM AND KORTRIJK**



## GETTING TO BELGIUM - AIRPORTS

### BRUSSELS AIRPORT

The biggest airport in Belgium is the **Brussels Airport (Zaventem)**. All major airlines fly to this international airport.

Website [Brussels Airport](#)

### EASY TRAIN

(airport → Kortrijk)

- Daily between **4h30 and 22h20**
- Average **2/3 trains per hour**
- **Duration 1h 45min**
- **1 or 2 lay overs** possible

Website [Belgian Train](#)

### BRUSSELS CHARLEROI AIRPORT

The 2<sup>nd</sup> busiest airport in Belgium is Brussels Charleroi Airport. **Many low-cost airlines fly to this airport**, such as:

- [Tuifly](#)
- [Wizzair](#)
- [Eurowings](#)
- [Lauda Europe](#)
- [Air Belgium](#)
- [Air Algerie](#)

Please bear in mind that there are **fewer public transport options to Kortrijk from Charleroi, especially in case of late-evening arrivals.**

Website [Brussels Charleroi Airport](#)

### LILLE AIRPORT

There is also **Lille Airport in France**, that **mainly serves low-cost carriers**, such as the following:

- |                             |                                   |
|-----------------------------|-----------------------------------|
| - <a href="#">Tuifly</a>    | - <a href="#">Air France</a>      |
| - <a href="#">Transavia</a> | - <a href="#">Sky Express</a>     |
| - <a href="#">EasyJet</a>   | - <a href="#">Air Algerie</a>     |
| - <a href="#">Ryanair</a>   | - <a href="#">Binter Canarias</a> |
| - <a href="#">Twinjet</a>   | - <a href="#">Nouvelair</a>       |
| - <a href="#">Volotea</a>   |                                   |

**Shuttle - airport to train station 'Lille Flandres'** = Bus stop at Entrance A of airport with direct train from Lille Flandres to Kortrijk every hour, takes about 30 minutes.

Website [Lille Airport](#)

There is a 2<sup>nd</sup> train station in Lille:  
→ 'Lille Europe' - walk across the street to 'Lille Flandres', where you can catch the train to Kortrijk.

## GETTING TO BELGIUM – BUS & TRAIN

### FLIBCO busses (= shuttle busses)

Offer direct transportation between different spots at advantageous prices when booked in advance. So, one of the best ways to get from the airport to Kortrijk: take the shuttle bus to Gent and then take a train from Gent to Kortrijk (35min).

**ALTERNATIVELY** - you can take the Brussels City Shuttle that will bring you from the airport to Brussels South (Midi) train station. And from there you can take a train to Kortrijk (1h 10min).

### A FRIENDLY TIP

If you are **younger than 26**, you have discounted train tickets:

- **YOUTH TICKET**  
(€7,10 /trip)
- **YOUTH MULTI**  
(10 trips for €59 = €5,90 /trip)

**BOOK TICKETS HERE**

[flibco.com](http://flibco.com)



**Charleroi Airport (CRL)** – Brussels Charleroi Airport  
(in front of terminal 1 building)



**Brussels Midi Station** – Gare du Midi / Zuidstation  
(Rue de France)

\* The tickets for these lines are valid for the entire day.  
You can use them for any of the following departures till 4AM of the next day.

€16,60\*



**Brussels Airport Zaventem**– Brussels Airport Zaventem  
(Intercity bus parking P16)



**Ghent** – Sint Pietersstation  
(3 Voskenslaan – Platform 22/23)



**Bruges** – Station  
(Rijselstraat-Spoorwegstraat / kiss & ride zone)

€9,99



**Charleroi Airport (CRL)** – Brussels Charleroi Airport  
(in front of terminal 1 building)

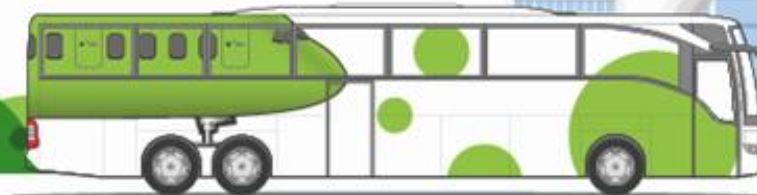


**Ghent** – Sint Pietersstation  
(3 Voskenslaan – Platform 22/23)



**Bruges** – Station  
(Rijselstraat-Spoorwegstraat / kiss & ride zone)

€12,99





## ACADEMIC CALENDAR 23-24

01/07/'23 - 31/08/'23	<b>Summer break</b> (Campuses/Student Admin. Office closed)
26/08/'23	<b>Open house at The Level</b> (Welcome Breakfast!)
28/08/'23 - 08/09/'23	<b>DAE Introductory Courses</b> (first-year students)
11/09/'23 - 15/09/'23	<b>International Welcome Week / Orientation Week</b> (including general DAE 'Kick-off Days')
18/09/'23	<b>START - DAE classes</b>
30/10/'23 - 04/11/'23	<b>Autumn break</b>
06/11/'23 - 10/11/'23	<b>Q-Week</b> (graded evaluations)
25/12/'23 - 06/01/'24	<b>Winter break</b>
08/01/'23 - 03/02/'24	<b>Exam period*</b>
05/02/'24 - 10/02/'24	<b>Inter-semester break</b>

### 5 HOLIDAY PERIODS

30/10/'23 - 04/11/'23	<b>Autumn break</b>
25/12/'23 - 06/01/'24	<b>Winter break</b>
05/02/'24 - 10/02/'24	<b>Inter-semester break</b>
01/04/'24 - 13/04/'24	<b>Easter break</b>
01/07/'24 - 31/08/'24	<b>Summer break</b>

### ADDITIONAL PUBLIC HOLIDAYS

01/11/'23	<b>All Saints' Day</b>
11/11/'23	<b>Armistice Day</b>
01/04/'24	<b>Easter Monday</b>
01/05/'24	<b>Labour Day</b>
09/05/'24	<b>Ascension Day</b>
20/05/'24	<b>Pentecost Monday</b>
15/08/'24	<b>Assumption Day</b>

DAE will be closed on these days.



\* Please check the end dates of the exam period carefully before you book your return tickets home. Do keep in mind that the second chance exams (re-assessments) take place in what we call 'third exam period' in August.



*North Sea*

Zeebrugge

Ostend

Bruges

Ghent

Antwerp

Mechelen

BRUSSELS

Kortrijk

Leuven

**BELGIUM**

Liège

Charleroi

Namur

Bastogne

FRANCE

NETHERLANDS

GERMANY

LUXEMBOURG



**Studying in a foreign country, getting to know new people, exploring different cultures - it's all a part of the international student life.**

During your studies at DAE we hope you will discover more about your host country, its culture and history. To start you off, **here are some basic facts:**

**592 DAYS - A WORLD RECORD FOR BELGIUM AS THE COUNTRY WITH THE LONGEST PERIOD WITHOUT AN ELECTED GOVERNMENT.**

This period started in December 2018.

**159 EMBASSIES & 2500 DIPLOMATS**

Brussels is the second largest diplomatic city in the world.

**11,7 MILLION INHABITANTS**

One of the smallest, diverse & densely populated European countries.

3 OFFICIAL LANGUAGES  
**DUTCH, FRENCH & GERMAN**

Dutch & French are official languages in the Belgian capital Brussels.

# FACTS ABOUT BELGIUM

WE PAY IN  
**'EURO' –**  
€

**4,4 MILLION PEOPLE SPEAK FRENCH**

in the region called Wallonia.

**BRUSSELS IS THE CAPITAL OF BELGIUM, FLANDERS & THE EUROPEAN UNION.**

It is a major center of international politics and it hosts **the European Commission, NATO** and many other international institutions.

**6,6 MILLION PEOPLE SPEAK DUTCH**

in the region called 'Flanders', where Kortrijk is also situated.

**HIGH STANDARD OF LIVING & EDUCATION**

Belgium was recognized as  
**AN INDEPENDENT COUNTRY IN 1830.**

The Monarchy was established in 1831 with Leopold I being the first King of the Belgians on the 21<sup>st</sup> of July.



## FACTS ABOUT BELGIUM

- Belgium is a small country with a **good public transportation system** and a **cycling network** currently providing 3180 km of cycling pleasure in West Flanders.

- Our gastronomic reputation is well known around the world: **Belgian chocolate, beer, French fries** (which are actually Belgian), **waffles** - we cater to many different tastes.

### - HISTORIC TOWNS:

Flemish cities have a **rich cultural heritage and vibrant night life**.

**Kortrijk and Brugge** have an interesting mix of the old and the new. They are 45 min away from each other and less than 3 hrs away from Brussels, Paris, London or Amsterdam by train.

Take a look at the video about art in Flanders:  
['Experience our Flemish Masters'](#)





## FACTS ABOUT BELGIUM

### WHAT ABOUT BELGIANS?

Family ties and friendship bonds are very important for Belgians. No wonder that Belgian students leave their student homes almost every weekend to spend time with their family members and friends.

Flemish people are known for speaking several foreign languages. Most of the people whom you will meet will speak English quite well, and most are happy to switch to English to help you out if there is anything you don't understand. You will also find many people who speak or understand French, German, Spanish, Italian and many other languages.

### MORE INFORMATION

- [belgium.be](http://belgium.be)
- [visitflanders.com](http://visitflanders.com)



## COST OF LIVING

### WHAT ARE THE LIVING EXPENSES IN KORTRIJK?

→ The tables on the following page demonstrate the estimated cost of living in Kortrijk. From your accommodation, to the everyday living costs and the transportation costs.

We **recommend a budget of +- €900 a month, or €10,800 for 12 months** to cover your year of study, excluding tuition fees:

- **€450 (on average) monthly housing** costs for accommodation and utility bills
- **€450 monthly living costs** for food, social life, transport etc.

In general, you will probably spend about:

- €270 on food
- €100 on social life
- €20 on printing costs
- €50 (every 3 months) on public transport
- €5 on bike rental
- €250 & €550 /month on a student room  
→ Cheaper ones are becoming more difficult to find.

### EXTRA EXPENSES

**How much money you actually spend will depend on your lifestyle and spending habits.**

The costs for housing, for example, may differ considerably. And if you plan to travel a lot during your stay here, you will need budget for those extra expenses.

Remember that during the first month of your stay there may be extra expenses for temporary accommodation, deposits, clothing, equipment (kitchen utensils, furniture, etc.). You can minimize these costs by shopping in cheap supermarkets and visiting student-friendly places.

**As energy costs are rising it's good to think about living more economically.**





## COST OF LIVING



Cinema ticket	€7.5 - €12
Theatre ticket	€15 - €20*
Opera ticket	€9 - €90*
Classical music concert	€15 - €70*
Rock/pop concert (local band)	€15 - €20*
Rock/pop concert (famous band)	€30 - €80*
Public swimming pool (/session)	€2,50 - €4
Football ticket (national competition)	€15 - €25*

\* depending on seating area



Type	Full cost	Real cost (after refund)
Consultation by general doctor	€22,50	€7,50
Home visit by general doctor	€32,32	€11,31
Consultation by specialist	€29,73	€11,05
Dentist appointment - adults	€74,17	€3,53
Consultation by physiotherapist	€19,02	€5,10
Consultation by gynaecologist	€26,27	€12,04



Large Bread (800g)	€2 - €3
Butter (250g)	€1,20 - €2
Meat: pork chops (1kg)	€7,50
Meat: beef steak (1kg)	€14 - €18
Chicken breasts (boneless, 1kg)	€5 - €12
Eggs (regular, 12 pieces)	€1,20 - €3
Milk (1 l)	€0,50 - €1,20
Wine (75 l)	€3,50 - €8
Water (1,5 l)	€0,30 - €1,50
Beer (50cl can)	€0,85 - €2,50
Apples (1kg)	€0,90 - €3
Carrots (1kg)	€1,20 - €1,30
Potato (1kg)	€0,50 / €1,75

## KORTRIJK

### WHAT KORTRIJK HAS TO OFFER

**Kortrijk (in French = Courtrai)** is a welcoming place for international students that offers a lot of opportunities for young people. It's a dynamic city with 79.000 inhabitants, which has been experiencing many changes during the past few years.

The city of Kortrijk offers students **cheap public transport, a free Student Welcome Concert** in October and **an event called 'Kortrijk Welcomes International Students'**, which includes a welcome reception with local specialities.

There **are four institutions of higher education in Kortrijk**: Howest, VIVES, KULeuven - Kulak and UGent. The number of university students rises every year, currently counting over 20.000 students in total.

#### More information:

- [Tourism Video Kortrijk](#)
- [Website City Kortrijk](#)
- [Facebook 'Kortrijk Studentenstad'](#)



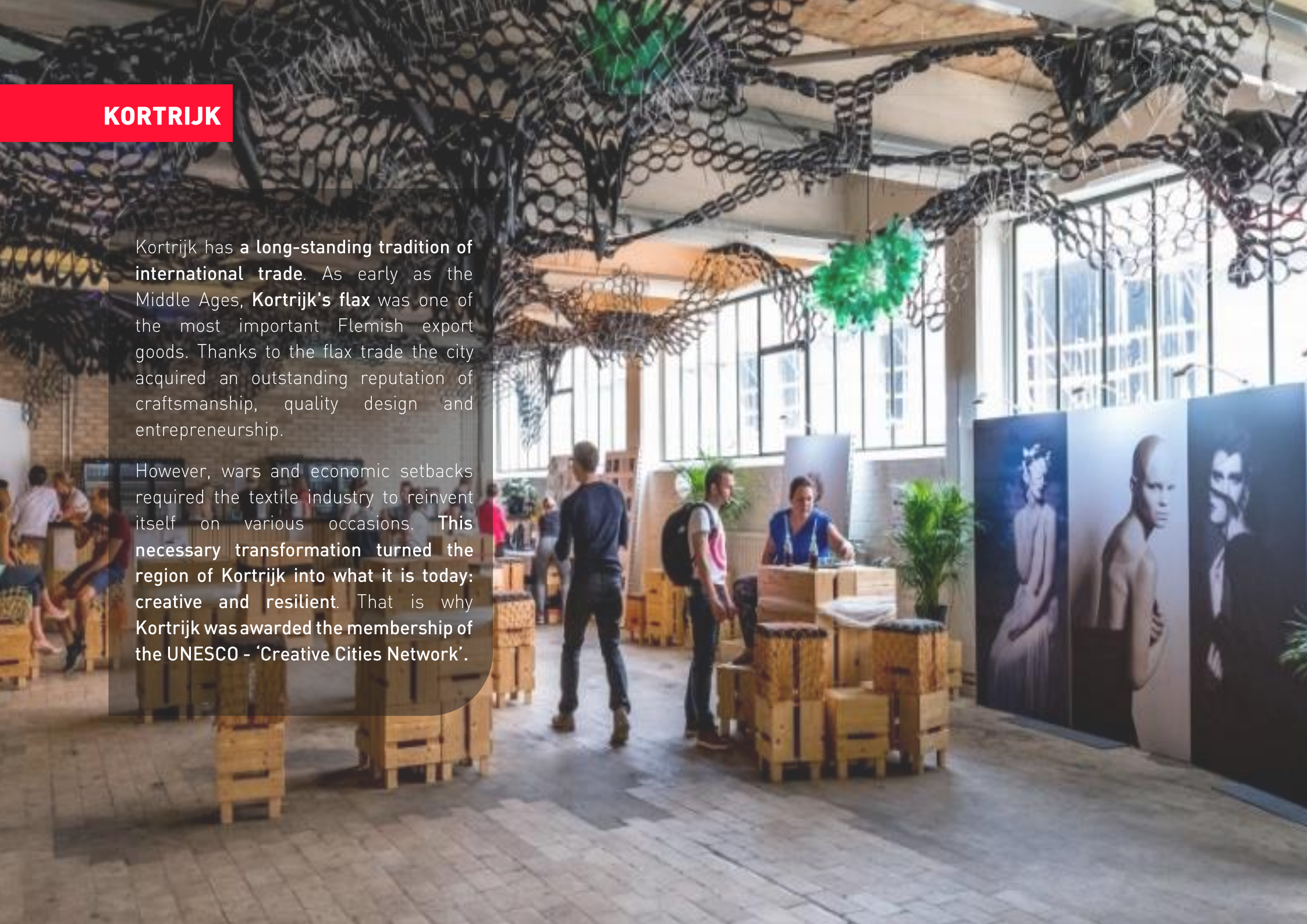
Picture by @mellovestravel



## KORTRIJK

Kortrijk has a **long-standing tradition of international trade**. As early as the Middle Ages, **Kortrijk's flax** was one of the most important Flemish export goods. Thanks to the flax trade the city acquired an outstanding reputation of craftsmanship, quality design and entrepreneurship.

However, wars and economic setbacks required the textile industry to reinvent itself on various occasions. **This necessary transformation turned the region of Kortrijk into what it is today: creative and resilient.** That is why Kortrijk was awarded the membership of the UNESCO - 'Creative Cities Network'.





# DESIGN IN KORTRIJK

## TEXTURE

The TEXTURE Museum tells us about the linen and flax industry. A story with very strong roots vouches for amazing craftsmanship and entrepreneurship, daring innovation and agility, as well as constant reinvention. In three rooms, set in an authentic flax dispatch building built in 1912, you will discover the revolutionary development brought about by the flax industry in this region.

## THE BUDAFABRIEK (BUDA FACTORY)

Budafabriek is a multidisciplinary forum where artists, entrepreneurs, academics, students and active citizens come together. Also home to the BUDA::lab, an open makers area of Designregio Kortrijk & Devine (Howest).



## WEEKS OF DESIGN

The annual Design Weeks (WONDER) highlights the prominent role of design education as a catalyst for regional development. Each year an exhibition presents the best student projects from the Flemish



## DESIGN X50'

Every two years DesignX50', an initiative of Design Regio Kortrijk, selects fifty innovative products and remarkable cases, which have been developed in the broad region around Kortrijk and are often marketed worldwide from there. All products are presented in a book. Six editions have already been published and a beautiful design presentation is what is aimed for.

## DEVELOPMENTS

**KORTIJK WEIDE** is a beautiful city district which is directly connected with all Howest campuses.

It includes:

- **Nelson Mandelaplein** (event square - room for 15.000 spectators)
- **'DEPART'** (multi-functional event hall)
- **Urban Sports Park** (skate, blade, BMX, step,...)
- **'Hangar K'** (start-up hub focused on digital technology)
- **'LAGO'** (Olympic swimming pool with wellness & huge waterslides)
- **Ecological park** with water garden
- Dedicated **covered campfire site**
- **Car-free walk & bike path** from our The Level to The Penta

**More info** [Kortrijk Weide](#)

## SPORT IN KORTRIJK



### SPORTPLUS CARD

[kortrijk.be](https://kortrijk.be)

The sport options for students in Kortrijk are offered by Howest in collaboration with the city of Kortrijk and its department for students, Kortrijk Student City. You can buy a **SPORTPLUS CARD (€3)**, which you can use to enjoy affordable sport options:

- **Unisport** (1 sport) → €29 (1 year) / €15 (3 months)
- **Multisport** (all sports, except fitness) → €38 (1 year) / €19 (3 months)
- **Fitness card** (fitness and all other sports) → €68 (1 year) / €34 (3 months)

You can buy it online at [vrijetijd.kortrijk.be](https://vrijetijd.kortrijk.be) or contact:

**Email** [sportdienst@kortrijk.be](mailto:sportdienst@kortrijk.be)

**Phone** +32) 056 27 80 00

(Tues. from 20<sup>th</sup> of Sept. on)

Discount code for students of Howest:  
**'Howest'**

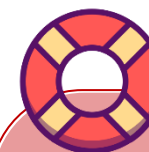


### FITNESS

[jimsfitness.be](https://jimsfitness.be)

By showing your  
**'Howest Student Card'** you get **-15% off**:

- Action valid until 30/06/'23
- Action valid for all students of Howest Kortrijk
- Action only valid via the website and not in the club
- Promotion cannot be combined with other promotions



### SWIMMING

[lago.be](https://lago.be)

Opposite 'The Level' we have the **LAGO** swimming pool.

- '1 session' - ticket (€2)
- '10 sessions' - ticket (€20)

**Address** Nelson Mandelaplein 19,  
8500 Kortrijk



### ZUMBA

[kortrijkstudentenstad.be](https://kortrijkstudentenstad.be)

From **4<sup>th</sup> of October**

**Tues.:** 8:00pm to 9:00pm

- 1 Session (€1)
- 5 Sessions (5hrs ticket) (€5)



### CLIMBING

[blackboxboulder.be](https://blackboxboulder.be)

By showing your  
**'Howest Student Card'** you pay

- 1 climbing session (€5)

**Address** Engelse Wandelweg 2,  
8500 Kortrijk



## SPORT IN KORTRIJK



## FREE CLASSES

Simon (STUVO)

Weekly classes offered free of charge by DAE and STUVO.

Access to Sport Hall 'De Loods':

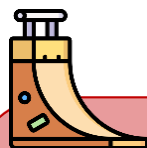
## Address

Graaf Karel de Goedelaan 32  
8500 Kortrijk

Upon presentation of your student card, you can borrow sport equipment (football, basketball, badminton) at the reception desk of Howest campus Kortrijk Weide between 8am and 8pm. Balls for basketball and football can also be collected at the STUVO office.



**howest**  
hogeschool



## SKATE &amp; MORE

kortrijk.be

'Tranzit' is an urban sports park right across our DAE campus 'The Level' (free).  
→ Skate, Blade, BMX, Step, Freerun,...

Skatebowl Albertpark, big outdoor skatebowl along the borders of the Leie river (free).

Address IJzerkaai, 8500 Kortrijk



## ENERGY BOOST

Simon (STUVO)

Energy Boost | Louis' Workout

From 27<sup>th</sup> of September

Mon. & Wed.: 6:30pm to 7:30pm

## Address

'The Level' Botenkopersstraat 2,  
8500 Kortrijk



## VOLLEYBALL

Simon (STUVO)

From 28<sup>th</sup> of September

Tues.: 9:00pm to 10:30pm

## Address

'sc Olympiadeplein Marke'  
Olympiadeplein 2, 8510 Kortrijk



## BASKETBALL

Simon (STUVO)

From 12<sup>th</sup> of September

Mon.: 7:00pm to 9:00pm

## Address

Sport Hall 'De Loods'  
Graaf Karel de Goedelaan 32, 8500 Kortrijk

## SPORT IN KORTRIJK

The city of Kortrijk offers multiple facilities for **skateboarding, scooter riding, rollerblading and biking**. Oh, and just so you know, Kortrijk was also the first city in Belgium to install a skate bowl. On your way to the skate bowl you'll also find a basketball cage.

Both just a stone's throw from 'The Level'.



## MUSIC IN KORTRIJK

### WILDE WESTEN

The sometimes quirky programme (a balance between national and internationally-rising stars, alternated with noteworthy underground acts) is supplemented by the annual Sonic City Festival, a niche event that showcases a different band or musician in each edition, new 'Jazz Cats' festival in March and the annual 'BOS!' Festival in July. They also organise workshops/info sessions for music lovers and/or novice musicians. Discounts possible with student card.

### ARTIST FROM WEST FLANDERS

Goose, Steak Number Eight, Amenra, Kiss Hiss, Channel Zero, STAKE, SX, Balthazar, Ozark Henry, Arsenal, Aborted, Hooverphonic, dEUS, Gorki, Triggerfinger, The Van Jets, Zornik, 2 Unlimited, Oscar and the Wolf,...

### ALCATRAZ

From its roots as a small one-day indoor hard rock and metal event, the Alcatraz Metal Festival (AMF) has grown into an amazing two-day metal experience with over 14.000 visitors from across Europe. While it is not the world's biggest metal fest (and nor does it proclaim to be), AMF is the ideal escape for those who are yearning for cosiness and ambiance topped off with an excellent line-up.

The fact that Kortrijk is known for being the ultimate city of music in West Flanders is no coincidence. **It is home to numerous cultural institutions and musical bands.** If you enjoy playing music and/or love dancing or theatre, check [Kortrijk City Guide](#) for nice activities and events.

### QUINDO

Quindo is an ambitious web radio for and by young Kortrijk. Students and volunteers bring you compelling music and original programmes about the city. Listen to Quindo and participate!

More info at [www.quindo.be](http://www.quindo.be).



## CULTURE IN KORTRIJK

### BUDA ARTS CENTRE

You will find this internationally renowned art centre on the island that shares its name - Buda Island. It is the **place to be to enjoy better films produced at home and abroad**. Every day it offers at least three screenings and there are also regular thematical film projects: Spanish film week, culture nights, breakfast films, Hot Docs, one-off screenings, etc. In addition, 150 contemporary performing artists can be found at work each year in the studios and theatres.

[buda.be](http://buda.be)

### STUDENT WELCOME CONCERT

Student Welcome Concert is a **yearly music festival in the heart of Kortrijk**. For 11 years now, students have been welcomed by this free festival in Kortrijk, a concept that has since been copied all over Belgium. On the stage you can see a mix of lesser-known bands and famous acts.

[swkortrijk.be](http://swkortrijk.be)

### THEATRE KORTRIJK - SCHOUWBURG

**Compelling theatre performances, intimate concerts, ground-breaking comedy,...** the Kortrijk Culture Centre is hugely diverse. 'The Schouwburg' programme features more than just music and is virtually the largest performing arts centre in Southwest Flanders.

[schouwburgkortrijk.be](http://schouwburgkortrijk.be)

### CONCERTSTUDIO

This **atmospheric concert hall** is a pioneer due to its exceptional acoustics and offers space for 224 music lovers.

[schouwburgkortrijk.be](http://schouwburgkortrijk.be)



In the car-free pedestrian zone in the city centre, you will find a wide variety of shops, from major chains to cosy boutiques. Below, you'll find all the information you'll need regarding our largest shopping centres in the area.

### K in Kortrijk

An impressive, hypermodern shopping centre created with 34,000 m<sup>2</sup> of shopping space right in the heart of the city. It offers a mix of home decor, fashion, and electronic items. Events are regularly held here.

**Centre open – Mon. to Sat.: 10:00 am to 7:00 pm**  
**Supermarket open – Mon. to Sat.: 8:00 am to 7:30 pm**  
**Sun.: 8:00 am to 1:00 pm**

### Ring Shopping Centre

This centre offers a range of fashion, leisure, decoration, personal care and catering establishments with well-known names such as Albert Heijn, Hema, C&A, JBC, H&M, Coolcat&, Delhaize and Kruidvat etc...

**Centre open – Mon. to Sat.: 10:00 am to 7:00 pm**  
**Supermarket open – Mon. to Sat.: 10:00 am to 8:00 pm**  
Closed on Sundays

Biking distance from The Level is 11 minutes.





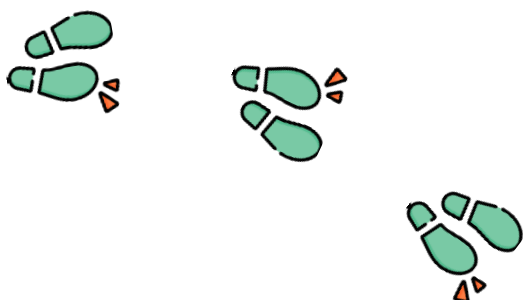
## CITY WALK

### 'Metamorphosis of the city' walk

This city walk doesn't just take you **on a stroll through the historical city centre** but also **highlights the metamorphosis that Kortrijk is currently experiencing.**

There is a handy map with a brief description of all the points of interest along the way. You can also download an audio version of the walk to your smartphone from the website of Tourism Kortrijk. It provides some interesting facts and amusing anecdotes. The city walk starts from the Tourism Kortrijk office in the Béguinage Park and is indicated by metal rivets in the ground.

[toerismekortrijk.be](http://toerismekortrijk.be)





## ACCOMMODATION



### THE WING – Howest Dorms

- 80 single student rooms
- For enrolled international students from Howest and University of Ghent: Regular, Erasmus and Exchange students
- With or without private toilet and bathroom sink.
- With common kitchen, TV-room, study room, dining room, showers and coin operated laundry facilities.
- Available sizes: between 17 m<sup>2</sup> - 26 m<sup>2</sup>
- The rental prices depend on the room type and vary between € 445 and € 575 /month. All prices are subject to change and all prices include water, electricity, gas and internet.
- Duration of the contract: 12 months  
→ 5 or 10 months for exchange students
- Strictly non-smoking

Distance to Howest Campus 'The Level':

- 10 min by bike
- 20 min on foot

**THERE IS A WAITING LIST  
FOR THESE DORMS!**



Contact our STUVO colleague  
**Simon Clinckemaillie**

## PRIVATE MARKET

Searching for a student room → the sooner, the better!

Keep in mind that costs vary on the private market, depending on your preferences (shared/private kitchen or bathroom,...) Consider opting for shared kitchen as cooking together and spending time with your roommates is something that you will appreciate during your stay here.

**Before signing a lease agreement, please check if the energy/water/internet bills/fire insurance are included in rent and paid by the landlord. If the costs are not included in the rent, the contract should clearly state how these costs will be calculated.**

**Please note that energy costs are rising enormously these days. Try to live as economically as possible.**

We also advise you to look for a room near our campus building 'The Level', as this will be most convenient for attending your classes and extracurricular activities.

**Here are some interesting websites:**

- **Kotwest**
- **Upkot**  
→ only for year contracts, no 6 months!
- **Student Housing Kortrijk**  
→ both year contracts and 6 months
- **Kotmatch**  
→ sublease of students rooms, focus on 6 months students

It is **YOUR RESPONSIBILITY** to find and arrange accommodation, but our Student Support Services (STUVO) can guide and support new international students during their search.

## ACCOMMODATION

If you are planning to come to Kortrijk for more than one day to look for accommodation and to finalise your enrolment, we recommend one of the following hostels:

[JEUGDHERBERGEN](#)

[FOCUS HOTEL](#)

## HOUSING ISSUES?

Do you want to report or solve problems with your landlord?



Contact our STUVO colleague  
[Simon Clinckemaijle](#)

## THE RENTAL CONTRACT

There are several types of contracts:

- a **student contract** with a term of **10, 11 or 12 months**
- a **short-term contract**
- a **'3, 6 or 9 years'-contract** (used for apartments and houses)

Legally, once the contract is signed, it cannot be terminated before it expires, unless stated otherwise in the contract.

Make sure to have a look at the ['Vlaamse Woningshuurdecreet'](#) for student tenancy agreements (Dutch only, best to use Google Translate).

It is advised to write down spoken promises made by the landlord (e.g. painting the room, renovating the kitchen, etc.), as well as make notes and photos of the individual gas and electricity meter in order to avoid misunderstandings in the future.

## THE DEPOSIT

Signing a lease contract will require a deposit.

- For **rooms**: a deposit of **1 or 2 months' rent**
- For **studios & apartments**: a deposit of **2 or 3 months' rent**

The deposit can only be used to compensate for damage to the rented property caused by the tenant (or by third parties to whom the tenant has granted access). The deposit or its balance will be reimbursed within one month after the end of the agreement, taking into account that the landlord should have the opportunity to draw up the final bill for heating, electricity, etc.

The landlord can charge an extra cost if the keys were not returned in time and/or the property has not been cleaned thoroughly. Make sure that you ask for (and keep) the receipt when you pay the deposit in cash.

## FIRST WEEK TO-DOS

Secure a  
**PERMANENT  
ADDRESS**

1

**REGISTER**  
at City Hall

3

Open  
**BANK  
ACCOUNT\***  
if needed

5

\* for non-EEA students,  
necessary for 'blocked  
account'-process; see  
information provided by  
Admissions

Register with  
**'EXPAT & CO'  
HEALTH CARE**  
provider

2

Police  
**CHECKS YOUR  
ADDRESS**  
or confirms it via  
Howest Student Admin

4

For **further information** regarding these  
steps, visit following links to the **Howest**  
website:

- [Visa, Insurance & Housing](#)
- [Registration City hall &  
Address Check-up](#)

Other Questions?

**Contact the**  
**'STUDENT ADMINISTRATION OFFICE'**  
Sint Martens Latermalaan 1B  
8500 Kortrijk

**Email** [studentadmin@howest.be](mailto:studentadmin@howest.be)

**Phone** +32 (0) 56 24 12 11

**Mon-Fri** 8.30 am - 12:00 am /  
1:00 pm - 4.30 pm

**howest**  
university of applied sciences



## TRANSPORT IN KORTRIJK



### BUS

There are **2 options for discounted bus fares**:

**1. You receive a 35% discount** on the purchase of a 'Buzzy Pazz' for all of Flanders, with the exception of Limburg (up to 24 y/o age)

- €21 - 1 month (normal price = €33)
- €52.65 - 3 months (normal price = €81)
- €139.75 - 12 months (normal price = €215)

[Apply here](#)

**2. You receive, for €10**, a bus pass with which you can ride on every bus within the territory of greater Kortrijk.

[Apply here](#)

When you enter the bus, show this bus pass together with your student card to the driver.



### TRAIN

Upon presentation of the enrolment certificate you receive upon your final enrolment, you can purchase a NMBS school pass or campus card. With this pass or card, you can travel at student rate (below 26 y/o):

- Choose between 1, 3 or 12 months of unrestricted travel when commuting to school
- Can be combined with other transport networks (STIB, TEC & **De Lijn\***)
- 2<sup>nd</sup> or 1<sup>st</sup> class
- Annual season ticket discount: 12 months for the price of €10
- Pay less when you park at our B-Parkings

\*Students not living in Kortrijk and daily commuting by train to Kortrijk with a De Lijn 'combi pass' (= train+bus) can also get 35% discount on their pass.

[Apply here](#)



### CAR

Bringing your car to Kortrijk can give you freedom of movement to visit neighbouring countries. But you should keep in mind that there are but a few free parking spaces in Kortrijk.

These are a few parking options:

- **Free Howest parking**

→ Nr. 3 (student card to access)

→ Nr. 4 (free access)

#### Address

Graaf Karel de Goedelaan  
8500 Kortrijk

- **Parking BUDABRUG**

You can apply for your pass at the reception desk of 'The Level'.

After paying a fee of €15, you will also need to present your photo identification and student card.



## BIKE – MOBIEL / SECOND-HAND

The most efficient way to move around Kortrijk is by bike. **There are 2 possibilities:**

### 1 – Rent a bike at ‘Mobiel’ for only €5 month

- Rent /month (€5)
- Warranty /year (€30)
- Administrative cost (€5) to extend your contract (2<sup>nd</sup> academic year)

Once **every 3 months** you will need to **bring in your bike for maintenance**. If you forget or bring it in too late, ‘Mobiel’ will charge you a fee (€7.50 for every maintenance that was skipped).

**In case of loss/theft, you have to pay the current value of the bike unless you apply for an additional anti-theft insurance**, in which case you will only have to pay €125. Insurance - 3 months (€15), 4 months (€21),...

**Address** Min. P. Tacklaan 57, 8500 Kortrijk

**Phone** +32 (0) 56 24 99 10

**Email** [info@mobiel.be](mailto:info@mobiel.be)



### 2 – Buy a second-hand bike

**Website** [dekringloopwinkel.be](http://dekringloopwinkel.be)

**Address** Gentsesteenweg 176, 8500 Kortrijk



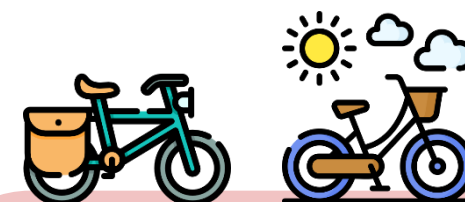
## BLUE BIKE

With a blue bike card you can reserve a bike in 47 cities. **In Kortrijk these are the current rates:**

- First 24h (€1,50)
- 24h - 48h (+€3,50)
- 48h - 72h (+€5,50)
- +72h, per 24h (+€10,50)
- Membership fee per Blue-Bike Card /year (€12)

You will receive the bill by the end of the month by mail.

**Website** [blue-bike.be](http://blue-bike.be)



## KORTRIJK FIETST

Would you like a tailor-made plan of where to explore by bike? Want to get lost in the beautiful scenery of West Flanders?

Check out Kortrijk’s own cycling guide, offering a multitude of routes, tips and tricks!

**Website** [kortrijk.be/kortrijkfietst](http://kortrijk.be/kortrijkfietst)

## SORTING WASTE

In Belgium waste is well-sorted in order to be recycled. Some types of rubbish are either **collected at your house** or can be **deposited at collection points** (like 'container parks' = recycling parks).

Reducing your waste by buying products with less packaging (using glass instead of plastic bottles etc.) is advised.

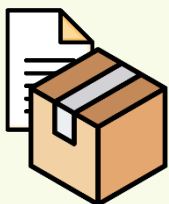
### THE FOLLOWING CATEGORIES OF RUBBISH CAN BE SORTED

(click on the categories for more information)



## HOUSEHOLD WASTE

- Non-recyclable waste, will be burned
- Dark grey/black bag (buy in most supermarkets)
- Weekly pick up by the city → [timetable](#)



## PAPER & CARDBOARD

- Every 2 weeks pick up by the city → [timetable](#)



## PMD

- Plastic packaging, Metal packaging & Drink cartons
- Blue bags (buy in most supermarkets)
- Every 2 weeks pick up by the city → [timetable](#)



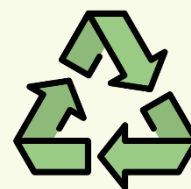
## GFT

- Organic waste (vegetables, fruit & garden waste)
- Compost / Household waste
- or 'container park'



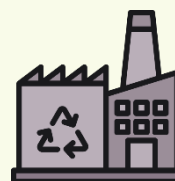
## GLASS

- Transparent colored or clear glass
- Glass bulbs in the street



## RECYCLE POINTS

- Reusable textile → [Kringloop](#) / [drop-off points](#)
- Old or expired medications → [pharmacies](#)
- Discarded electrical/electronic appliances – Batteries – Lightbulbs  
→ [Recupel](#) drop-off points



## CONTAINER PARKS

- Recycling centres where people can bring (free of for a fee) their large domestic waste, small dangerous waste and other specific waste fractions (construction debris, wood,...)



## USEFUL INFORMATION

### CLIMATE & CLOTHING

Belgium has a **temperate maritime climate, which causes frequent rainfalls. The weather can sometimes be unpredictable and changes throughout the day. During the summer months it can be warm and sunny.**

In general, the climate is considered mild. January and February are the coldest months, when the temperature can drop below zero at night, with occasional snow. During autumn months (September, October & November) and winter months (December, January & February) **you should make sure to bring warm and waterproof clothing with you (raincoat, shoes,...)**, as the weather tends to get wet and cold and you may experience snowfall.

Although it can be rainy sometimes, it is still possible to appreciate the many beautiful sights of Belgium. This small country offers a unique European atmosphere and represents both modern and traditional culture like no other.

#### LAUNDROMATS

- Wassalon – Rijselstraat 50
- Comfort Wash – Sint-Denijsestraat 4
- 't Wasseretje – Mgr. de Haernelaan 30

### MEALS

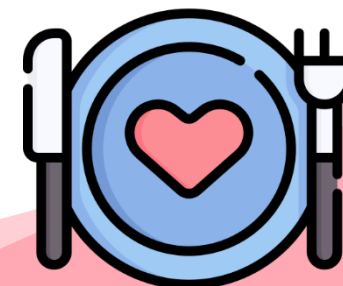
DAE students can eat at the following *campus areas*, both a 10 min. walk from 'The Level':

- The Penta
- The Obee

There you can buy a warm lunch, a fresh made salad, snacks, soup, bread rolls and drinks at affordable prices. Here are some indicative prices:

- fresh soup (€0,70)
- warm snacks (€1,80 - €3)
- dish of the day (€4,50)

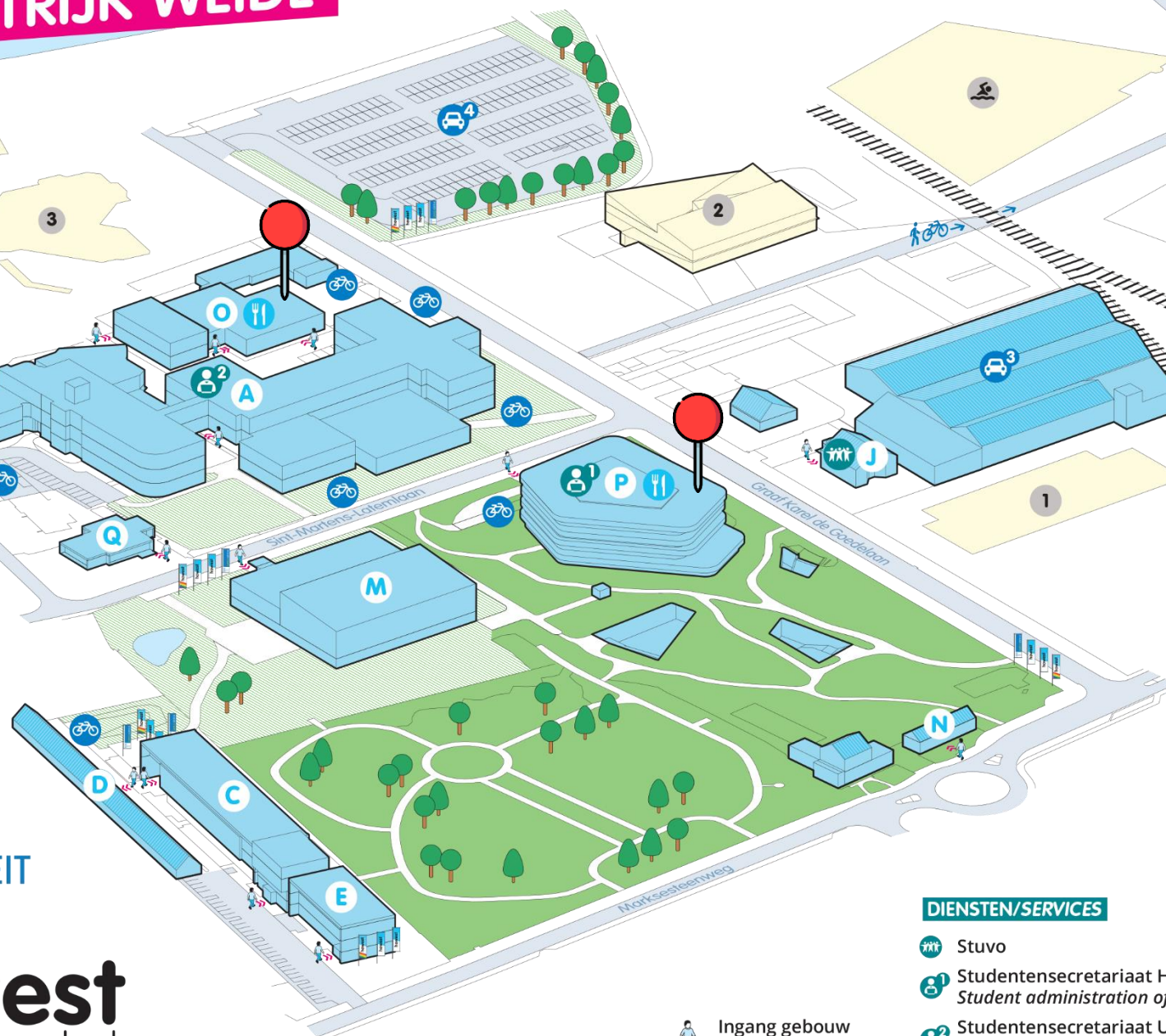
Of course, each campus has all the necessary facilities (microwaves,...) for you to eat your own packed lunch too.



# CAMPUS KORTRIJK WEIDE

UNIVERSITEIT  
GENT

**howest**  
hogeschool



## PARKING

- 3 Parking 3
- 4 Parking 4
- Fietsenstalling  
Bicycle parking

## GEBOUWEN/BUILDINGS

- A** Gebouw/Building A  
Sint-Martens-Latemlaan 2B
- C** Industrial Design Center (IDC)  
Marksesteenweg 58
- D** Paardenstallen
- E** Algemene Diensten  
Central Office  
Marksesteenweg 58
- J** The Office
- L** The Level  
Botenkopersstraat 2
- M** Gebouw/Building M
- N** New Oasis
- O** The Reactor / Obee
- P** The Penta  
Sint-Martens-Latemlaan 1B
- Q** 't Pandje

- 1** Flanders Make
- 2** VEG-i-TEC
- 3** PTI
- Zwembad/pool LAGO

## DIENSTEN/SERVICES

- Stuvo
- Studentensecretariaat Howest  
Student administration office Howest
- Studentensecretariaat UGent  
Student administration office UGent

Ingang gebouw  
Building entrance

## USEFUL INFORMATION

A big advantage of studying in **Belgium** is that it is located in the centre of Europe, which means it is **a perfect starting point for city trips**.

Some of Europe's prominent cities (London, Paris, Rotterdam, Amsterdam, The Hague and Luxembourg) are all situated within a radius of 300 km from Kortrijk. In 4 hours you can get to London, Frankfurt, Strasbourg or Cologne.

Isn't that great?



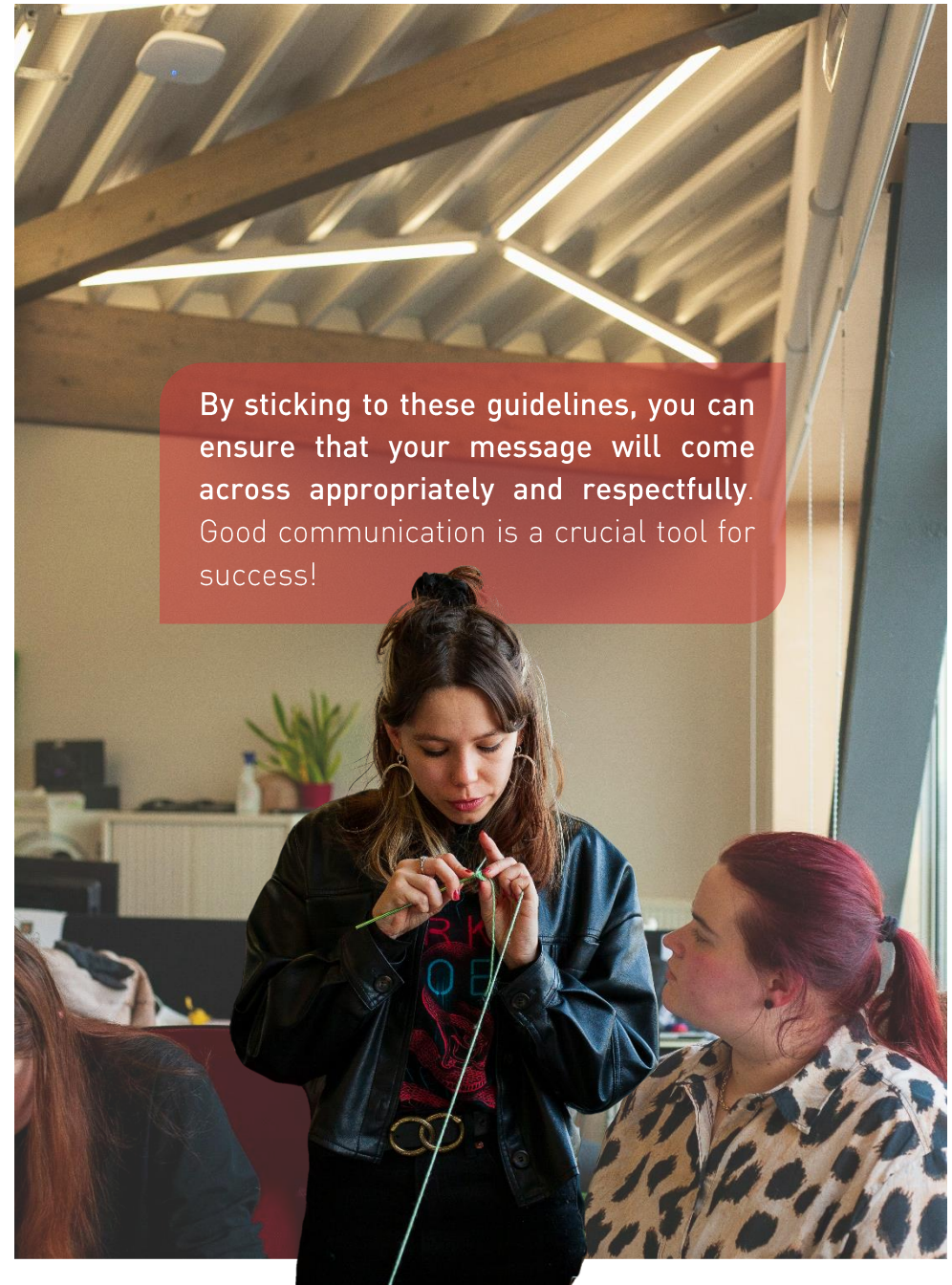


A useful piece of information – that very much varies from culture to culture – is **how to address your lecturers here at DAE**.

As a general rule, it is advisable to **call your lecturers “Sir” or “Miss/Mrs.”** At DAE, there is no need to call your lecturer by “Professor” (this is more common within larger universities in Flanders). Each lecturer is different – **some prefer to be called by their first name, while others prefer to be addressed more formally. Most teachers will inform their students regarding how they would like to be addressed during the first class meeting.** When in doubt, it is best to ask respectfully.

It is also important to respect your lecturer’s privacy, which means no messaging through social media (including Discord).

**Please keep your communication professional when communicating with lecturers; standard punctuation, capitalization, spelling, and grammar are expected when writing an email.** Professional writing style and moderate formality shows your respect and distinguishes an email from a text message. So, using emojis, acronyms, abbreviations, etc. is OK when texting your friends, though this is a no-go when communicating with your lecturer. Don’t forget to also use a salutation and signature.



By sticking to these guidelines, you can ensure that your message will come across appropriately and respectfully. Good communication is a crucial tool for success!

### TELEPHONE NUMBERS



# 101

Police



# 100

Ambulance & Fire dep.



# 112

EU emergency –  
There is also an app



# 070 344 344

Card stop –  
Call when payment card lost/stolen

### ADDRESSES & WEBSITES

#### Howest Student Support (STUV0)

Graaf Karel De Goedelaan 32, 8500 Kortrijk

#### Student Administration Office (The Penta)

Sint-Martens Latemlaan 1B, 8500 Kortrijk

#### School Library (The Penta)

Sint-Martens Latemlaan 1B, 8500 Kortrijk

#### IT Support (Building-A)

Sint-Martens Latemlaan 2B, 8500 Kortrijk

#### Signpost (IT/Hardware)

Magdalenastraat 4, 8500 Kortrijk

#### Thebulletin.be

A platform for Belgium's international community

#### Visitflanders.be

Tourism in Flanders

#### Studyinlanders.be

